

Anti- His 6 tag antibody, rabbit serum

60-051 100 ul

Epitope tagging has become a powerful tool for detection and purification of expressed proteins. His6-epitope tag is especially useful because the tagged recombinant proteins can be easily purified by affinity chromatography with metal ion (e.g. Ni²⁺, Co²⁺ etc.) conjugated resins. Due to their small size, His epitope tag does not affect the tagged protein's biochemical properties in most cases. Anti-His epitope tag antibody is useful for identification of a recombinant protein tagged with 6X His at N-terminal, C-terminal and internal of the proteins.

Applications:

1. Western blotting (dilution: 1/1,000)
2. ELISA (assay dependent)

Not good for immunoprecipitation. Other applications have not been tested.

Immunogen: GSHHHHHHGCG synthetic peptide cross-linked to KLH with C-terminal Cystein.

Specificity: This antibody recognizes His6-tagged fusion proteins.

Form: Antiserum added with 0.05% sodium azide

Storage: Shipped at 4°C or -20°C and stored at -20°C.

Reference: Simpson RJ, Adams PD and Golemis EA “ Basic Methods in Protein Purification and Analysis.A laboratory Manual” ColdSpring Harbor Laboratory Press (2009) New York

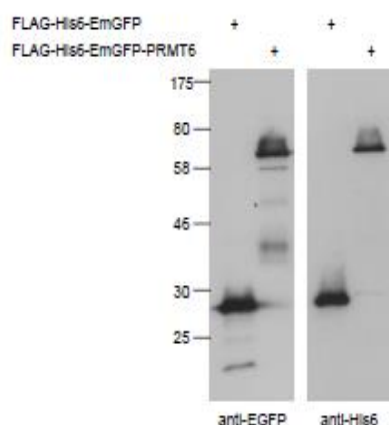


Fig. Detection of His-tagged proteins (FLAG-His6-EmGFP, FLAG-His6-EmGFP-PRMT6) in crude extract of 293T cells expressing the recombinant proteins with anti-EGFP antibody (left panel,) and anti-His6 antibody (right panel). The antibodies were used at 1,000 fold dilution.